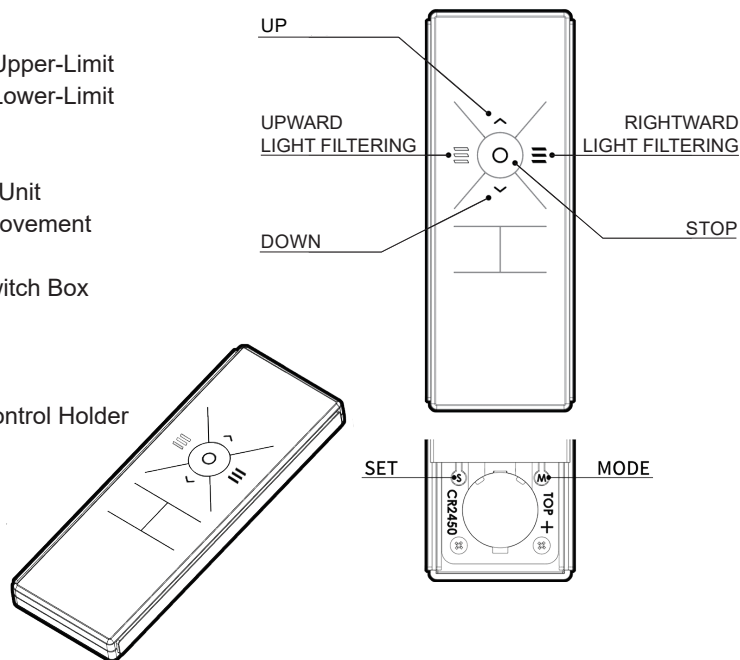


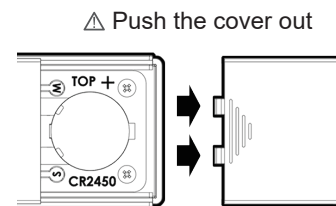


Table of Contents

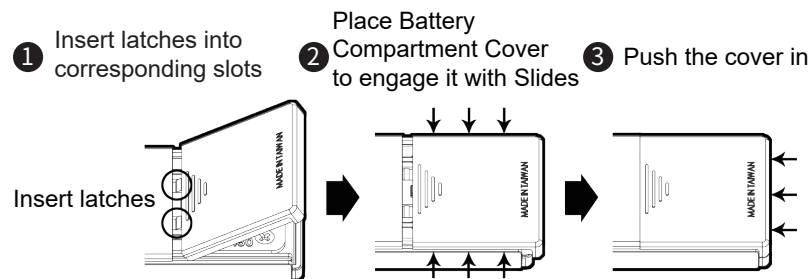
- 1-1 Setting or modifying position of Upper-Limit
- 1-2 Setting or modifying position of Lower-Limit
- 1-3 Setting of Light Filtering Position
- 1-4 Setting of Auto Light Filtering
- 2-1 Adding another Remote Control Unit
- 3-1 Alter direction of Zebra Shade movement
- 4-1 Clear off Password
- 5-1 Externally connected Manual Switch Box
- 6-1 Battery Replacement
- 6-2 Product Specifications
- 6-3 Quick Setting Index
- 6-4 Instructions for using Remote Control Holder



How to open Battery Compartment Cover



How to replace Battery Compartment Cover



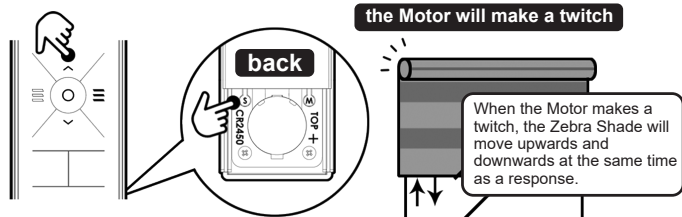
Key check-points prior to making settings

- ① When setting Upper-/Lower-Limit points, set Upper-Limit first, then the Lower-Limit.
- ② First, make sure if the direction of movement is correct. Verify if the Zebra Shade moves upwards by pressing [UP] and downwards by pressing [DOWN]. After that, carry out setting or modification of Upper-/Lower-Limit points. In case the Zebra Shade moves in the opposite direction, refer to the Steps of Item 3-1 in Table of Contents to correct the direction.

1-1 Setting or modifying position of Upper-Limit

STEP-1

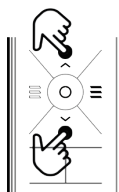
Press [SET] + [UP] keys until the Motor makes a twitch, indicating the setting mode of Upper-Limit is activated.



STEP-2

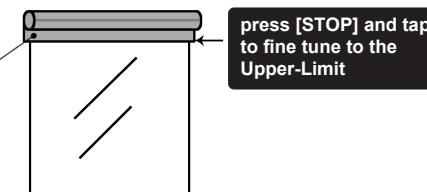
Press [UP] or [DOWN] key to move the Zebra Shade to a pre-determined position, to be set as the Upper-Limit.

Tap to fine tune. Press for 2 seconds, and it will move continuously.



CAUTION

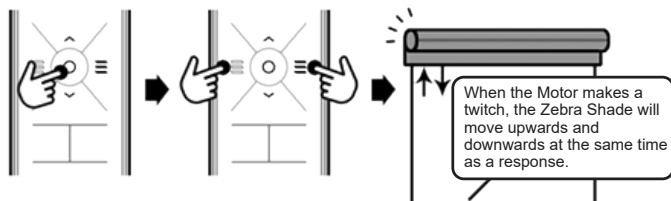
While the Shade is getting close to reaching the Upper-Limit, please press [STOP] to stop the movement to avoid damage to the motor. Then, tap to fine tune to the place where you would like it to be set up as the Upper-Limit.





STEP-3 When the pre-determined position is reached, press [STOP] key once to stop the movement; press any of the keys [UPWARD LIGHT FILTERING] or [DOWNWARD LIGHT FILTERING] + [SET] to confirm; the setting is completed when Motor makes a twitch.

press [STOP] press 1 of the keys + [SET] The motor makes a twitch.

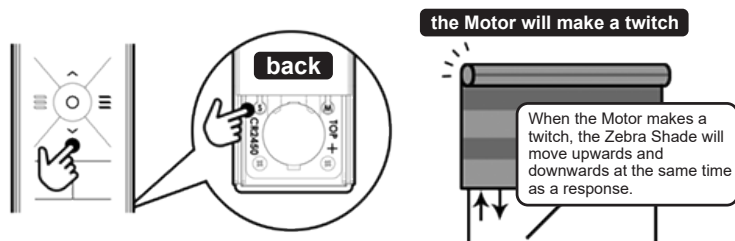


Setting Completed

When all procedures are done, the Upper-Limit setting is completed, too. And the setting of Lower-Limit has been cleared as well.

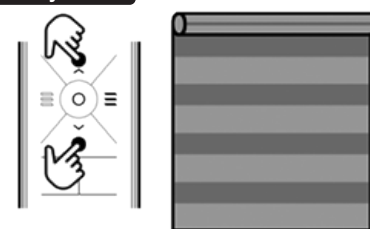
1-2 Setting or modifying position of Lower-Limit

STEP-1 Press [SET] + [DOWN] keys until Motor makes a twitch, indicating that the setting mode of Lower-Limit is activated.



STEP-2 Press [UP] or [DOWN] key to move the Zebra Shade to a pre-determined position, to be set as the Lower-Limit.

Tap to fine tune. Press for 2 seconds, and it will move continuously.



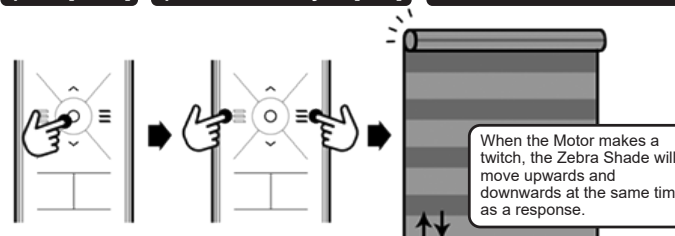
CAUTION

When entering the Lower-Limit position setting mode, the mode will be deactivated if no keys are pressed within 5 seconds. Plus, previous setting will not be recorded. Please go back to STEP-1 and reset it.

reach to the Lower-Limit

STEP-3 When the pre-determined position is reached, press [STOP] key once to stop the movement; press any of the keys [UPWARD LIGHT FILTERING] or [DOWNWARD LIGHT FILTERING] + [SET] to confirm; the setting is completed when Motor makes a twitch.

press [STOP] press 1 of the keys + [SET] The motor makes a twitch.



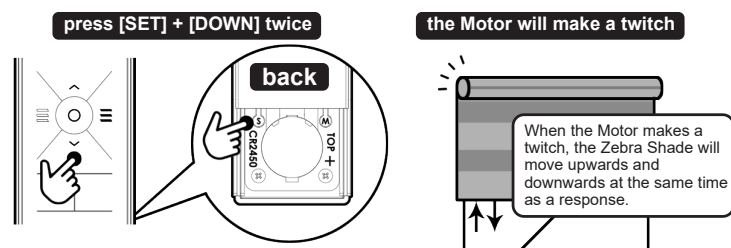
Setting Completed

When all procedures are done, the Lower-Limit setting is completed, too.

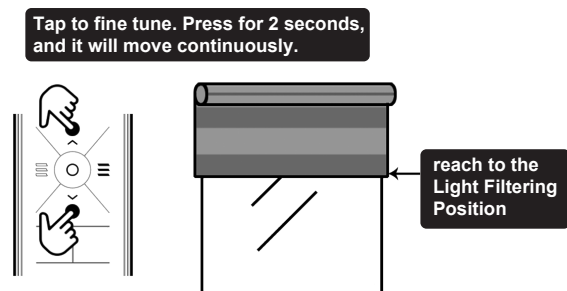


1-3 Setting of Light Filtering Position

STEP-1 Press [SET] + [DOWN] keys until Motor makes a twitch; then, press [SET] + [DOWN] keys again until Motor makes another twitch, indicating that the setting mode of Light Filtering Position is activated.

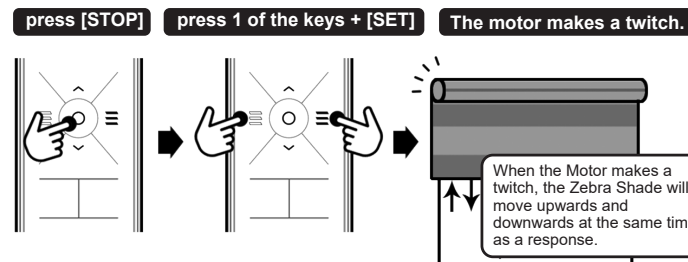


STEP-2 Press [UP] or [DOWN] key to move the Zebra Shade to a pre-determined position, to be set as the Light Filtering Position.



CAUTION
When entering the Light Filtering Position setting mode, the mode will be deactivated if no keys are pressed within 5 seconds. Plus, previous setting will not be recorded. Please go back to STEP-1 and reset it.

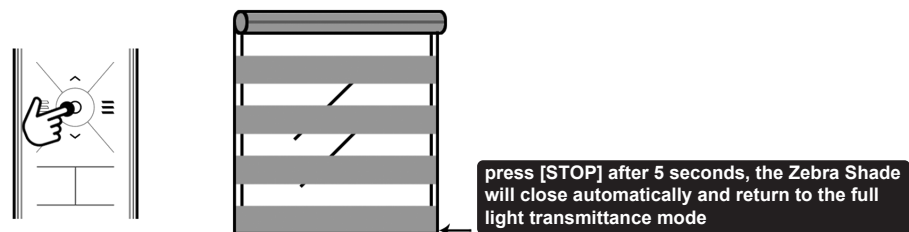
STEP-3 When the pre-determined position is reached, press the [STOP] key once to stop the movement; press either of the keys [UPWARD LIGHT FILTERING] or [DOWNWARD LIGHT FILTERING] + [SET] to confirm; the setting is completed when the Motor makes a twitch.



Setting Completed
When all procedures are done, the Light Filtering Position setting is completed, too.

1-4 Setting of Auto Light Filtering

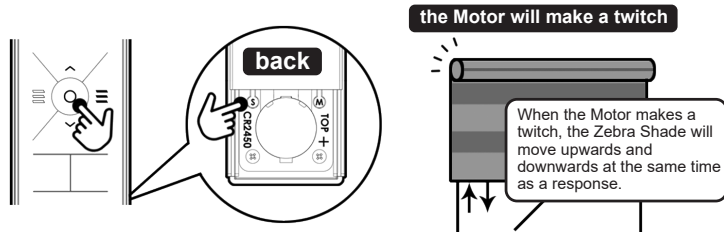
Do not press any key within 5 seconds; and then press [STOP] to return to the full light transmittance mode from any position.



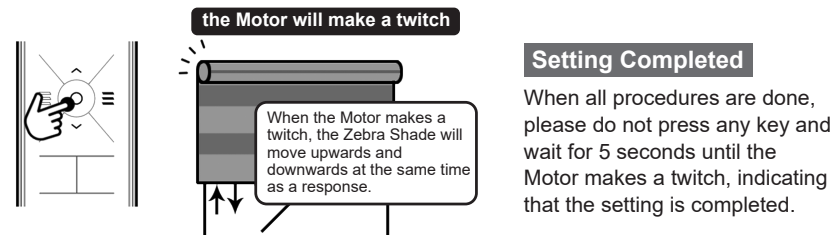


2-1 Adding another Remote Control Unit

STEP-1 Press and hold [SET] + [STOP] until the Motor makes a twitch, indicating that the setting mode of Adding another Remote Control Unit is activated.

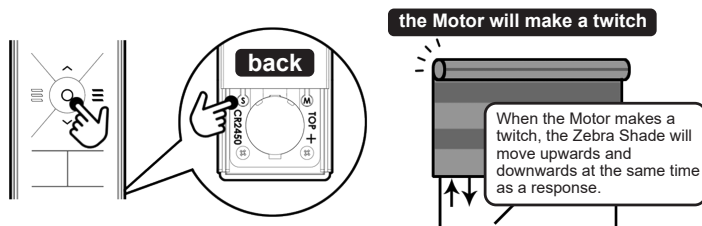


STEP-2 Now press [STOP] key of the Remote Control to be added; the adding process is completed when the Motor makes a twitch.

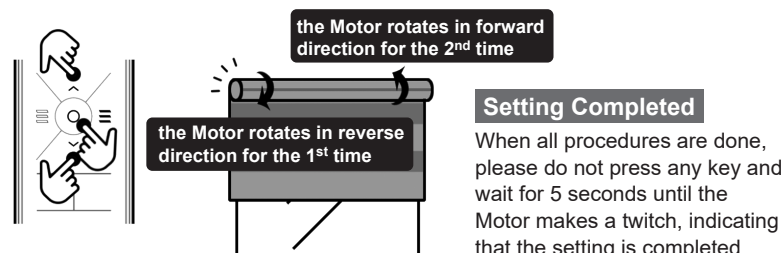


3-1 Alter direction of Zebra Shade

STEP-1 Press [SET] + [STOP] keys until the Motor makes a twitch, indicating that the setting mode of Altering direction of Zebra Shade is activated.



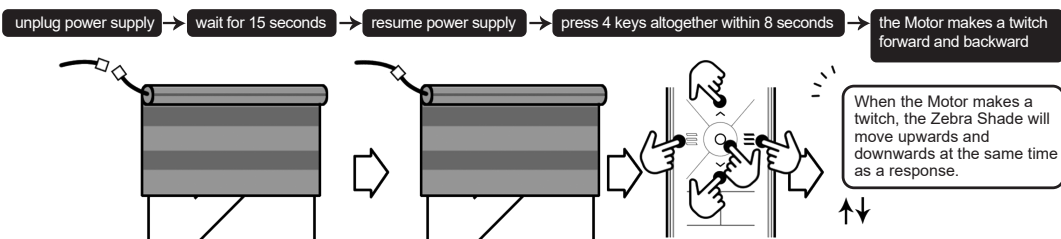
STEP-2 Now press [UP] + [STOP] + [DOWN] keys all together, the Motor will rotate in reverse direction; press [UP] + [STOP] + [DOWN] keys all together again, the Motor will rotate in forward direction.



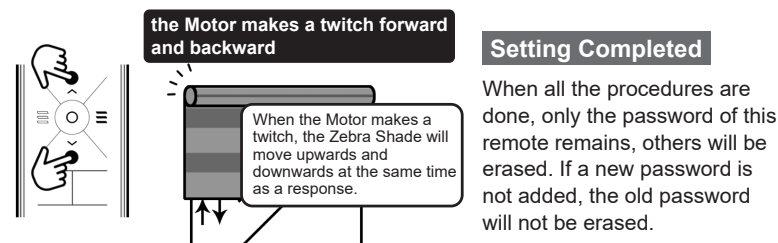


4-1 Clear off Password

STEP-1 Unplug power supply of the Motor, wait for 15 seconds, resume power supply of it. Press [UP] + [STOP] + [DOWN] + either of the keys [UPWARD LIGHT FILTERING] or [DOWNWARD LIGHT FILTERING] altogether 4 keys within 8 seconds until the Motor makes a twitch.

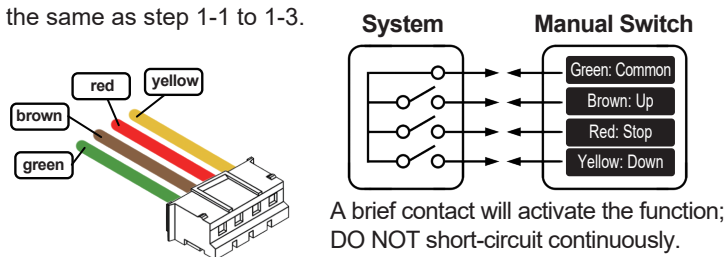


STEP-2 After Motor makes a twitch, simultaneously press [UP] + [DOWN] keys of the Remote Control within 8 seconds; password is cleared off when the Motor makes a twitch.



5-1 Externally connected Manual Switch Box

It's the same as step 1-1 to 1-3.



Manual Switch Function (code 2680 Type, code 2240 Type):

- UP**
- 1 Press [UP] shortly, the full light transmittance mode of the Zebra Shade will be activated.
 - 2 Press [UP] for 1 second, the Zebra Shade will be opened completely.

- STOP**
- 1 Press [STOP] shortly, the Zebra Shade will stop immediately.
 - 2 When the Zebra Shade is fully closed, press [STOP] shortly, the full light transmittance mode of the Zebra Shade will be activated.
 - 3 When the full light transmittance mode is activated, press [STOP] for 1 second, the Zebra Shade will be closed completely.
 - 4 When the Zebra Shade is fully opened, press [STOP] for 1 second, the Zebra Shade will be closed completely.

- DOWN**
- 1 Press [CLOSE] shortly, the full light transmittance mode will be deactivated.
 - 2 Press [CLOSE] for 1 second, the Zebra Shade will be closed completely.
 (When the Zebra Shade is moving, press the key of another direction, it will stop immediately.)



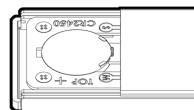
6-1 Battery Replacement

- 1 With flat side (positive +) of the Battery facing upwards, making sure that the Battery is latched up by two spring plates, insert Battery in a slanted angle to enter it into the Battery Holder.

flat side (positive +)



- 2 Completed.



6-2 Product Specifications

Battery: CR2450 3V (One-time type lithium battery)

Dimensions: L 13CM, W 4.8CM, H 1.1CM

Standby Current: <1uA

Modulation Method: OOK

Encoding Method: Internally-burnt fixed coding

Transmission Frequency: 433.92MHz

Antenna Type: on board, Gain=0 dbi

Weight (including battery): 66g

6-3 Quick Setting Index

Upper-Limit Setting: [SET]+ [UP]

Lower-Limit Setting: [SET]+ [DOWN]

Setting of Light Filtering Position: [SET]+ [DOWN] *twice

Setting of Auto Light Filtering: do not press any key for 5 seconds, and then press [STOP]

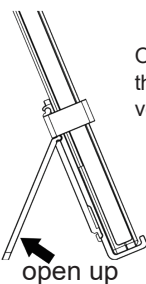
Add another Remote Control: (Original Remote Control) [SET] + [STOP], (Remote Control 2) [STOP]

Alter direction of Zebra Shade movement: [SET] + [STOP], [UP] + [STOP] + [DOWN] (reverse direction), [UP] + [STOP] + [DOWN] (forward direction)

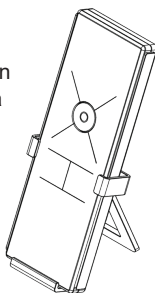
Clear off Password: [UP] + [STOP] + [DOWN] + either [UPWARD LIGHT FILTERING] or [DOWNWARD LIGHT FILTERING] key, [UP] + [DOWN].

6-4 Instructions for using Remote Control Holder

Vertical Holder



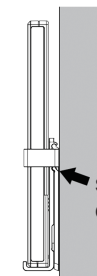
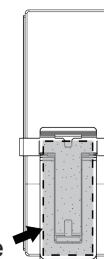
Open-up support plate on the back for the use as a vertical holder.



Wall-mount Holder

Apply the provided double-face adhesive tape on the back of Holder and stick it onto the desired position on the wall, as a wall-mounted holder.

Apply the adhesive tape



stick it onto the desired position